

2024

UNM HERBARIUM  
MUSEUM OF SOUTHWESTERN BIOLOGY

# ANNUAL REPORT





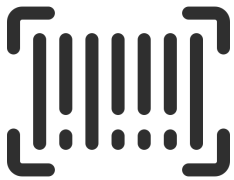
# Table of Contents

Numbers and Highlights .....	3
Farewell to a wonderful Curator .....	4
2024 Foray .....	5
Ongoing Field Work .....	6
Where in the world is Carmen San Diego? .....	7
Science Communication .....	8
Collection Highlight.....	9
Collection Outreach.....	10
The People at the UNM Herbarium .....	11
Extended Family of the UNM Herbarium .....	12
Thank You .....	13
Support the UNM Herbarium .....	14





# Numbers and highlights from 2024



## Added **3,224** new specimens

Over 3,000 new specimens were accessioned into the UNM Herbarium and are available on SEINet, our online data repository ([swbiodiversity.org](http://swbiodiversity.org)) where we host **140,036** vascular plant specimens.



## Visited by over **275** guests

There were 18 tours in 2024. Four of the tours were for Jefferson Middle School. Seven of the tours for UNM groups, four of the tours were for public land management agencies and three of the tours for local K-12 groups. Additionally, we were visited by researchers, students, community members and plant ID night participants.



## Volunteers worked **3,668** hours

We host a special crew of rotating and more long term volunteers at the herbarium who aid in specimen processing from mounting to imaging to filing and even cataloguing our reference book library.



## Personnel collected **1,793** specimens

Herbarium graduate students and herbarium staff collected close to 2,000 specimens across New Mexico, all deposited in the collection.



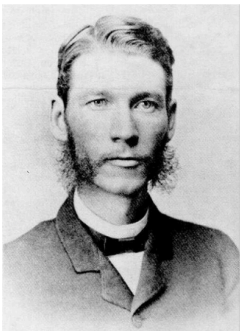
# Farewell to a wonderful Curator



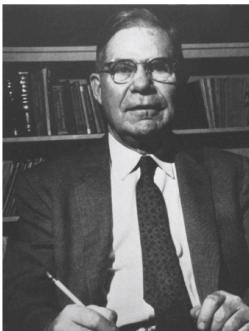
Hannah Marx and her son Emmet at the 2024 Foray.

The University of New Mexico Collection holds a long history of regional collection work with various curatorial foci. While she was only with us for four years, her efforts are lasting. Of all of her contributions, her most lasting effect is investing in collections; from time to resources to research to outreach to community engagement to education, her leadership positively impacted the well being of the collection. During her tenure, community engagement was the highest its ever been, collection growth was the highest it's been in multiple decades, and a bustling of new research surged amidst heightened collection activity. The University of New Mexico Collection is a better collection now because of the vital work Hannah Marx conducted between 2021-2024. Luckily she will still be working in the Southern Rocky Mountains alpine, so keep an eye out! Thank you for your service Hannah, you Marx-ed your spot here!

## UNM Herbarium History: 1900 - 2023



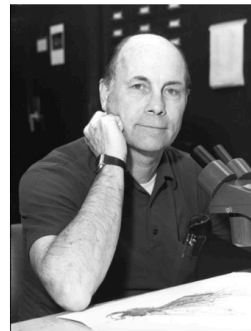
Clarence Luther Herrick  
UNM President (~1900)



Edward Castetter  
(1928 – 1953)  
Cacti & Ethnobotany  
25 years



Ray C. Jackson  
(1953 – 1958)  
Asteraceae  
5 years



William C. Martin  
(1958 – 1989)  
"A Flora of New Mexico"  
31 years



Tim Lowrey  
(1990 – 2020)  
Asteraceae systematics  
30 years



Hannah E. Marx  
(2021 – present)  
Alpine floristics  
2.5 years



# 2024 Foray

Our second foray was held in the Guadalupe and Brokeoff Mountains over a 3-day weekend in early October and resulted in 340 collections from 34 botanists from across the state. It was a very successful event and the specimens collected have been fueled plant id nights, which has been a continuously enriching series. The specimens were collected across BLM and FS land, and included non-vascular specimens this year. Many notable records were discovered and are mostly all databased. Guadalupe Christian Church Camp hosted our large group, which ended in lots of campfire talks and another overall success. Thanks to all who came!



Top Left: Jeremiah Westerman pressing *Physostegia*. Top Right: Group photo of Foray participants! Bottom Left: Group of participants looking at Chihuahuan grasses. Bottom Right: Erika Rowe with the third occurrence of *Bletia nitida* in the state.



# Ongoing Research

## Alpine

Alpine work continued in 2024 with a collaborative trip to the Jicarita Peaks. Joseph Kleinkopf and Harpo Faust co-led the alpine efforts, a part of the Western North America Alpine Plant Surveys. They were joined by Natural Heritage of New Mexico's Grace McCarthy and Amanda Kennedy, working on vegetation mapping, as well as Hannah Marx and her family. Peter Harris of New Mexico Backcountry Horseman packed us in and out, and we descended right into the statewide native plant conference in Taos.



## Desert

Graduate student, Bryana Olmeda, held it down for another year in the Brokeoffs, a part of their 3 year floristic study in the desert mountain range. They ended their 2024 season, their last Brokeoff season, with 904 specimens, spending 40 full field days in the Brokeoffs.





# Where in the world is Carmen San Diego?



It's me, Carmen San Diego, just kidding, Harpo here! In 2024 I got to meet up with some amazing botanists & landowners across the state of New Mexico. Thanks to everyone who came along and supported these collections. Below are just a few highlights from the season.



Jim McGrath, Gila NF



Erika Rowe & Shawna Begay  
New Mexico State Botanist  
& Arnold Cliffords Student



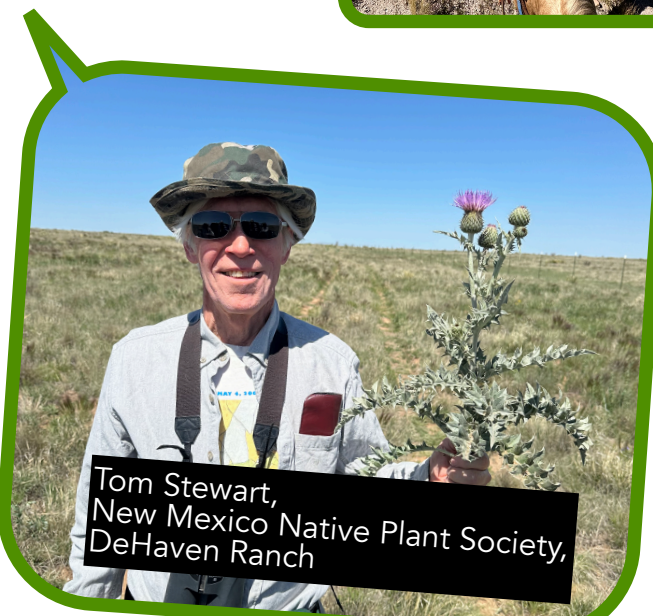
Sarah Potter,  
Brazos Conservation Company



Peter Harris,  
Backcountry Horseman



Donna Stevens,  
Gila National Forest



Tom Stewart,  
New Mexico Native Plant Society,  
DeHaven Ranch




# Science Communication


In 2024 Herbarium Personnel attended 5 conferences around the world. This resulted in multiple presentations, a lot of networking and a healthy amount of fun. Below are some highlights from the conferences we attended.

## Marx Lab


#BOTANY2024 PRESENTATIONS




**Erin Berkowitz, MS & Elizabeth Lombardi\*, postdoc**  
**Monday 9:15-9:30am, Grand Gallery F**  
 Uncovering over 150 years of herbarium specimen data to examine the impacts of climate change on alpine plant phenology in the southern Rocky Mountains




**Jeremiah Westerman, BS Biology Honors '24**  
**Monday 5:30-7:00pm, Poster LOC-016**  
 Effects of Pollination Syndromes on Alpine Plant Communities in the Southern Rocky Mountains



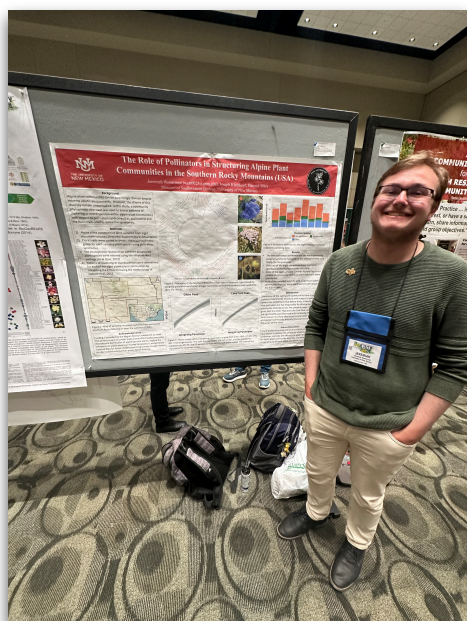
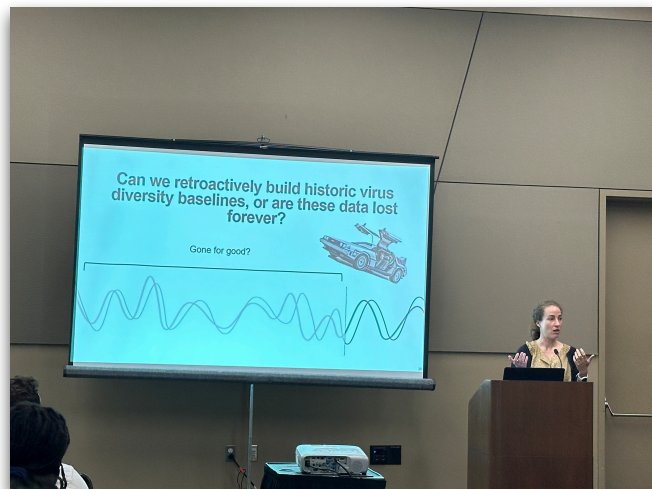
**Dr. Elizabeth Lombardi, postdoc**  
**Tuesday 8:00-8:15am, Gallery Overlook D**  
 Expanding the extended specimen: *Hesperis matronalis* and Turnip mosaic virus (TuMV) across space and time



**Joseph Kleinkopf, PhD candidate**  
**Tuesday 9:15-9:30am, Grand Gallery D**  
 Drivers of Alpine Plant Community Turnover in Western North America



**Harpo Faust, UNM Herbarium collections manager**  
**Tuesday 3:45-4:00pm, Ballroom D**  
 Synthesizing digitized historical plant collections information with open-access spatial data to identify priorities for future collection efforts & increased research applications



Top Left: Full list of presentations given by herbarium personnel at the Botany Conference, with top right showing Lizzie Lombardi above and Joseph Kleinkopf below, in action! Bottom Left: Jeremiah Westerman Bottom Right: Bryana Olmeda at the Gila River Conference.





# Collection Highlight 🔍

Another perk of having 3 Graduate Assistants in the spring was letting each GA choose a special project amidst ongoing daily tasks. Erin Berkowitz prioritized the Arsene specimens, Bryana Olmeda prioritized annotating a backlog of misidentified accessioned specimens and Lisa Garcia used part of their hours to make a tour video of the collection.

**This video is publicly available online on our youtube page.**



**Click here to watch!** 

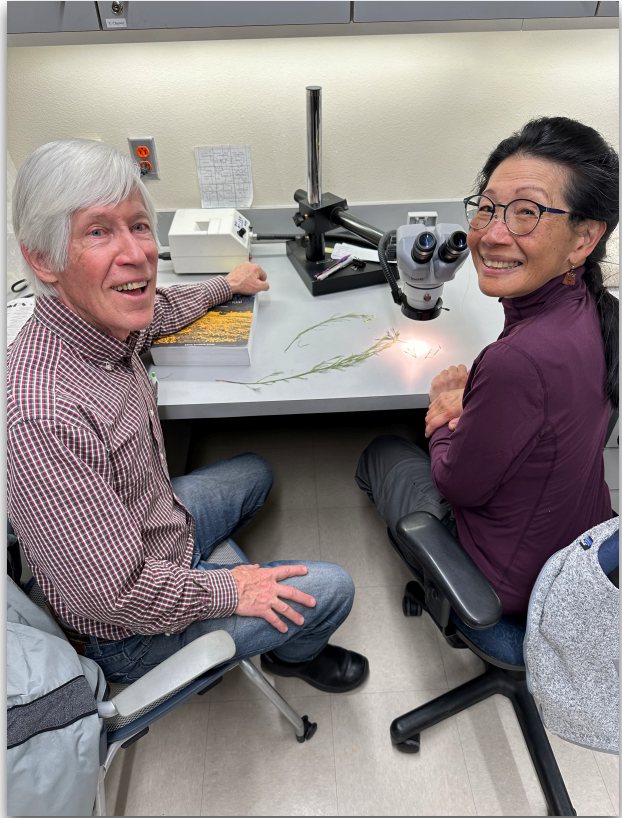
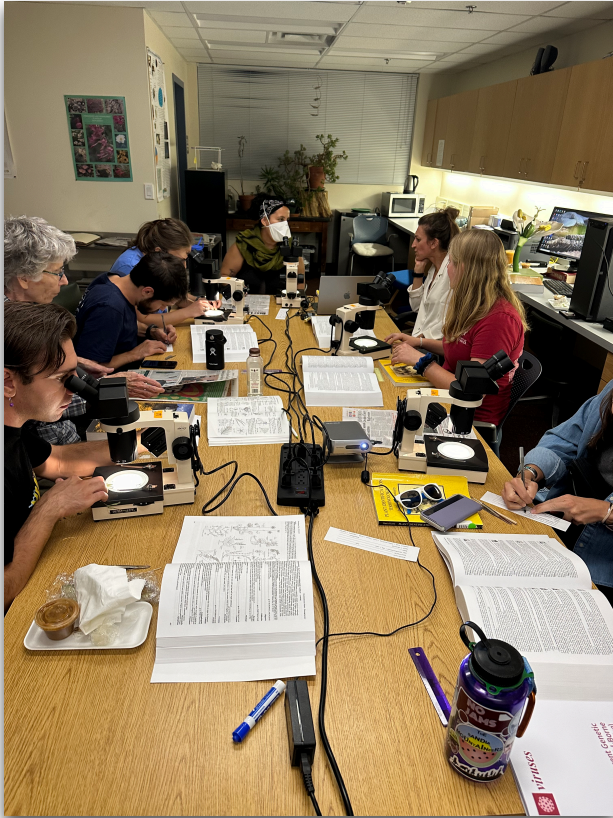
[https://www.youtube.com/watch?v=4ICDt\\_IUoAY&t=1s&ab\\_channel=UNMHerbarium](https://www.youtube.com/watch?v=4ICDt_IUoAY&t=1s&ab_channel=UNMHerbarium)





# Collection Outreach

In 2024 another busy year full of identification nights and tours continued.



Top Left: A busy Plant ID Night. We hosted 6 nights, 3 per semester, and had 95 people participating. Top Right: Plant ID Night regulars, Tom Stewart and Doris Eng. Below Left: Bryana Olmeda giving a collection tour to a large middle school group. Bottom Right: Jefferson Middle School students learning how to key out plants.





# Personnel 2024



Curator .....	Hannah Marx
Collections Manager .....	Harpo Faust
Graduate Assistant (Spring-Fall) .....	Bryana Olmeda
Graduate Assistant (Spring) .....	Erin Berkowitz
Graduate Assistant (Spring) .....	Lisa Garcia
Postdoctoral Associate .....	Lizzie Lombardi
Graduate Student Researcher .....	Joseph Kleinkopf
Undergraduate Student Staff .....	Jules Terra
	Shadiya Onor
	Jeremiah Westerman
	Luciano Velez



# Extended Family



<b>Research Associates .....</b>	<b>Bob Sivinski</b> <b>Yvonne Chauvin</b> <b>Grace McCartha</b> <b>Erika Rowe</b> <b>Martin Purdy</b> <b>Steve Reed</b>
<b>Library Associate .....</b>	<b>Anette Colbert</b>
<b>Volunteers .....</b>	<b>Brain Ashley</b> <b>Marcus Judkins</b> <b>Rae French</b> <b>Cass Landrum</b> <b>Sara Keeney</b> <b>Joanne McEntire</b> <b>Jasmine Bebo</b> <b>Janel Lomansey</b>



# Thank You

All of this work could not be done without the support of the botanical community here in New Mexico. We want to extend gratitude to the many students, volunteers, associates, foray participants, researchers, biologists and botanists who have helped maintain this herbarium from the past to the present.

As times grow more and more unknown, we understand how difficult it is to give. A very special thank you to those who donated to our herbarium in 2024. Your support helps us continue to maintain this incredibly important collection and we would not be able to continue without your contributions.

## 2024 Donor Highlight

Mary Adams

Joe Cook

Diane Cress

Chick Keller

Julie Luetzelschwab

Steve Reed

John Holt Robertson

Cristina Salvador

Bob Sivinski

Tom Stewart

New Mexico Native Plant Society



# Support the UNM Herbarium

This year we are asking that contributions are made to our division fund, linked below, to help fund student workers in the collection, as it is our most pressing need. With an uncertain future, your gifts directly help us maintain this collection, by funding student staff salary.

Donations are best made on our website linked below to our foundation. You can also scan the QR code below.

Thank you to the generous botanical community in the wonderfully biodiverse state of New Mexico.

Please consider donating!



## More Information

<http://www.msb.unm.edu/divisions/herbarium/index.html>

## Contact Us

Email Dr. Marx: [hmarx@unm.edu](mailto:hmarx@unm.edu)

Email Harpo Faust: [harpofaust@unm.edu](mailto:harpofaust@unm.edu)

Call the Herbarium: (505)-277-1360

